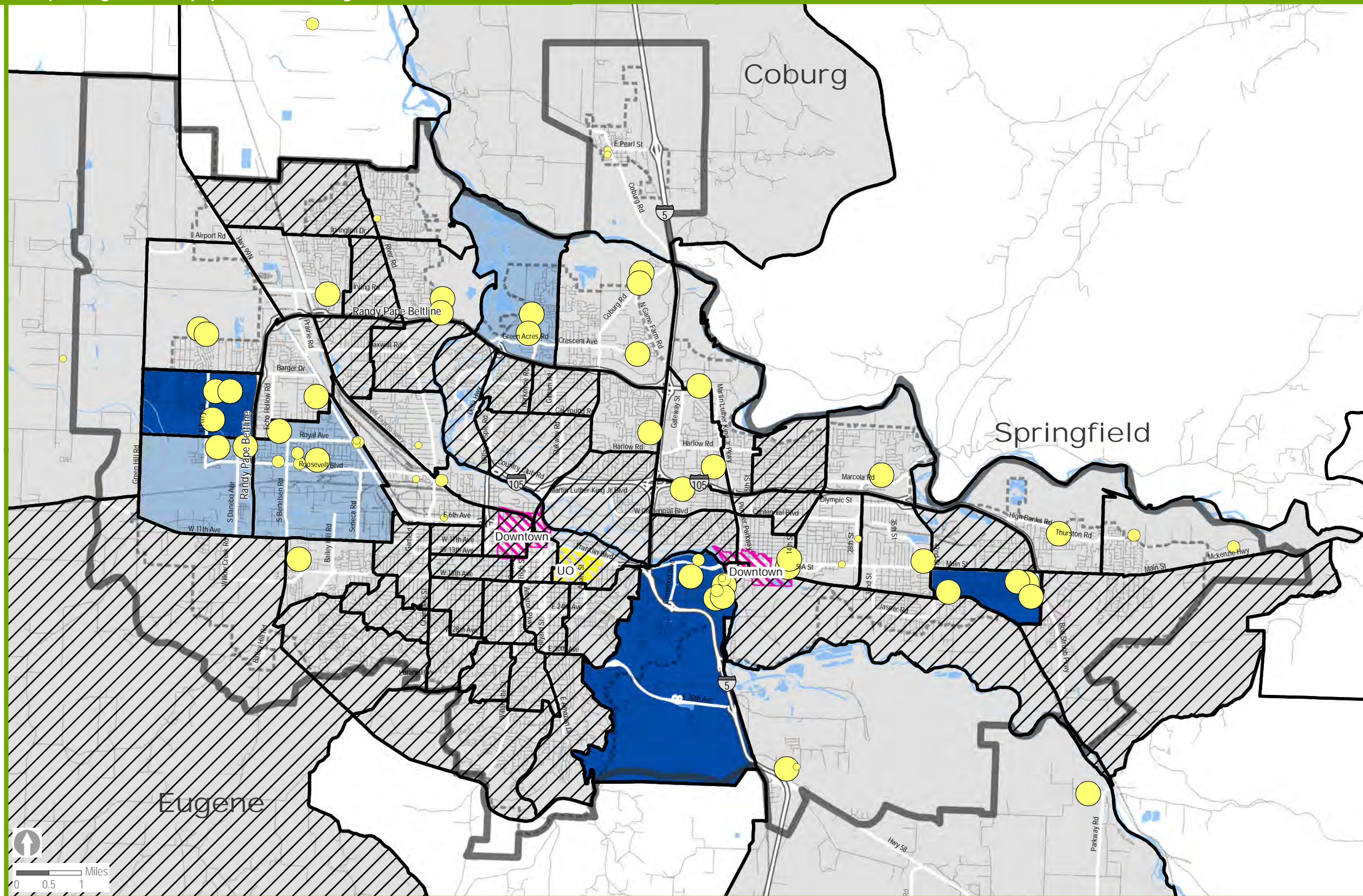


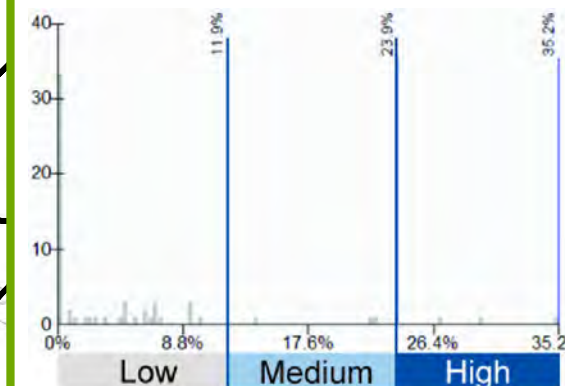
Equity & Opportunity Assessment Housing Access

Manufactured Home Parks

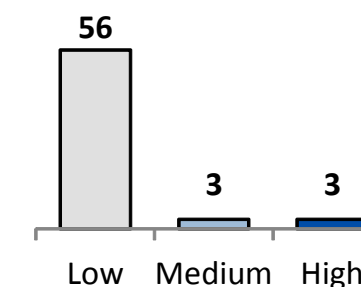


This map shows manufactured home park units as a percentage of total housing units in the Metropolitan Planning Organization area census tracts. About 5% of all housing units in the Metropolitan Planning Organization area census tracts are in manufactured home parks.

The full range of data for each map has been divided into thirds to create low, medium, and high percentage categories. A histogram is also included to show that the data is not necessarily distributed equally across these three categories. About 39% of manufactured homes in parks are in the top 3 tracts in the highest percentage category.



The chart below shows the number of tracts in the Metropolitan Planning Organization Area that have low, medium, or high percentages of housing that are manufactured dwelling spaces.



Map date: 8/27/13 Map data: Regional GIS, State of Oregon OHCS
 Caution: This map is based on imprecise source data, subject to change, and for general reference only.
 The work that provided the basis for this map was supported by funding under an award with the U.S. Department of Housing and Urban Development. The substance and findings of the work are dedicated to the public. The author and publisher are solely responsible for the accuracy of the statements and interpretations contained in this publication. Such interpretations do not necessarily reflect the views of the Government.

- Census 2010 Tracts
- Metropolitan Planning Organization Area boundary
- Urban Growth Boundaries

Units in Manufactured Home Parks as a Percentage of Total Housing Units

- Low: 0% - 11.9%
- Medium: 12% - 23.9%
- High: 24% - 35.2%

Manufactured Dwelling Parks by Size

- 4 - 19
- 20 - 49
- 50 - 398
- Tracts with no Manufactured Home Parks